

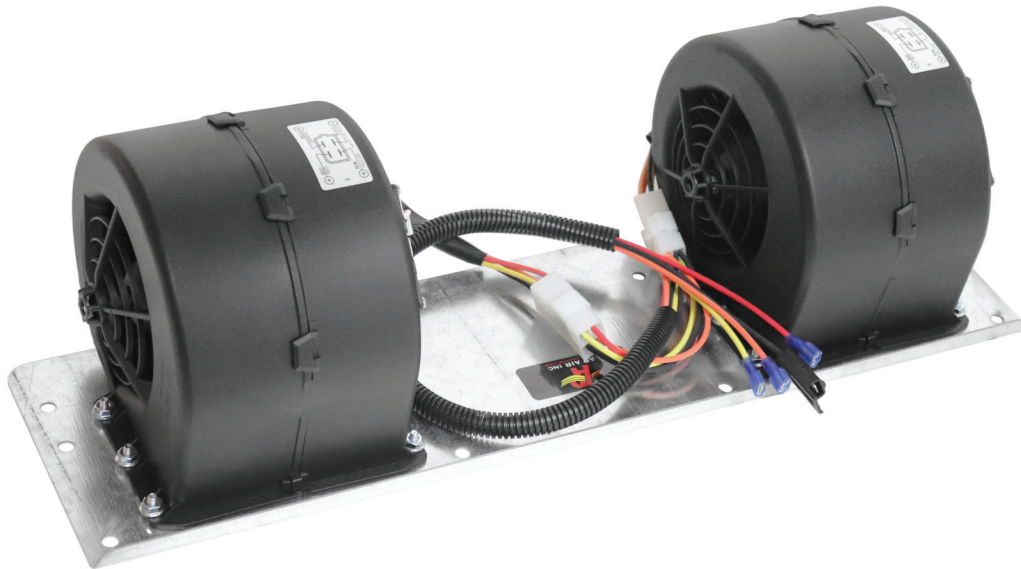


Instructions | Part#: BM4037

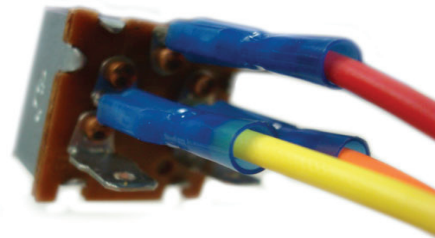
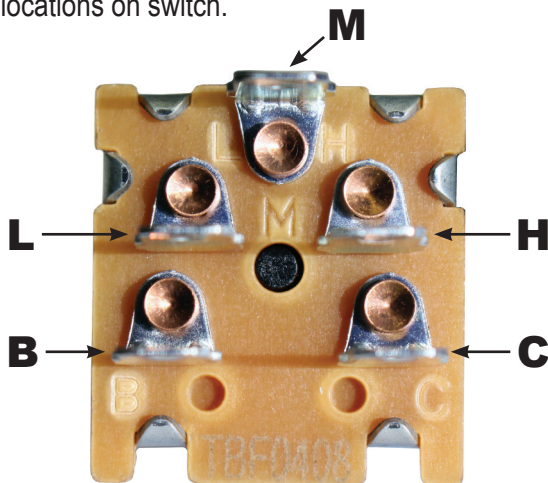
John Deere, Blower Motor Update Kit

Fits John Deere Models:

Tractors	1640, 2040, 2040S, 2140, 2350, 2550, 2750, 2940, 2950, 3040, 3140, 4030, 4040, 4040 Euro, 4040S, 4050, 4055, 4230, 4240, 4240 Euro, 4240S, 4250, 4255, 4350, 4430, 4440, 4440 Euro, 4450, 4455, 4555, 4560, 4630, 4640, 4650, 4755, 4760, 4840, 4850, 4955, 4960, 8440, 8450, 8630, 8640, 8650, 8850
Combine	1032, 1042, 1052, 1055, 1065, 1068H, 1072, 1075, 1075HY/4, 1085, 1085HY/4, 2254, 4425, 484, 6620, 6622, 7440, 7445, 7450, 7455, 7720, 7722, 8820
Forage Harvester	5720, 5730, 5820, 5830
Swather	2320, 2420, 3430, 3830
Sprayer	6000, 6100, 6500, 6600, 6700
Wheel Loader	444C Wheel, 444CH Wheel, 444D Wheel, 544C Wheel, 544D Wheel, 544E Wheel, 624E Wheel, 644C Wheel, 644D Wheel, 644E Wheel, 644ER Wheel, 644EZ Wheel, 844 Wheel
Backhoe	210C, 310C, 315C, 410B, 410C, 510B, 510C, 610B, 610C, 710B, 710C
Crawler	450G, 455G, 550G, 555G, 650G
Scraper	762, 762A, 762B, 862, 862B



When replacing original 2 wire blower assembly with new 4 wire, high efficiency assembly you must bypass original resistor and connect wires (red, yellow, orange) directly to blower switch. New 4 wire motors have new style resistor built in to motor. Leave the (C) constant power & the (B) Battery terminal hooked up in their original locations on switch.



- **Yellow Wire:** Connect to (L) on switch-Low Speed
- **Red Wire:** Connect to (M) on switch-Medium Speed
- **Orange Wire:** Connect to (H) on switch-High Speed